

S.E. 1/4
SECTION 33, T.7N.,2W.,S.L.B.&M.

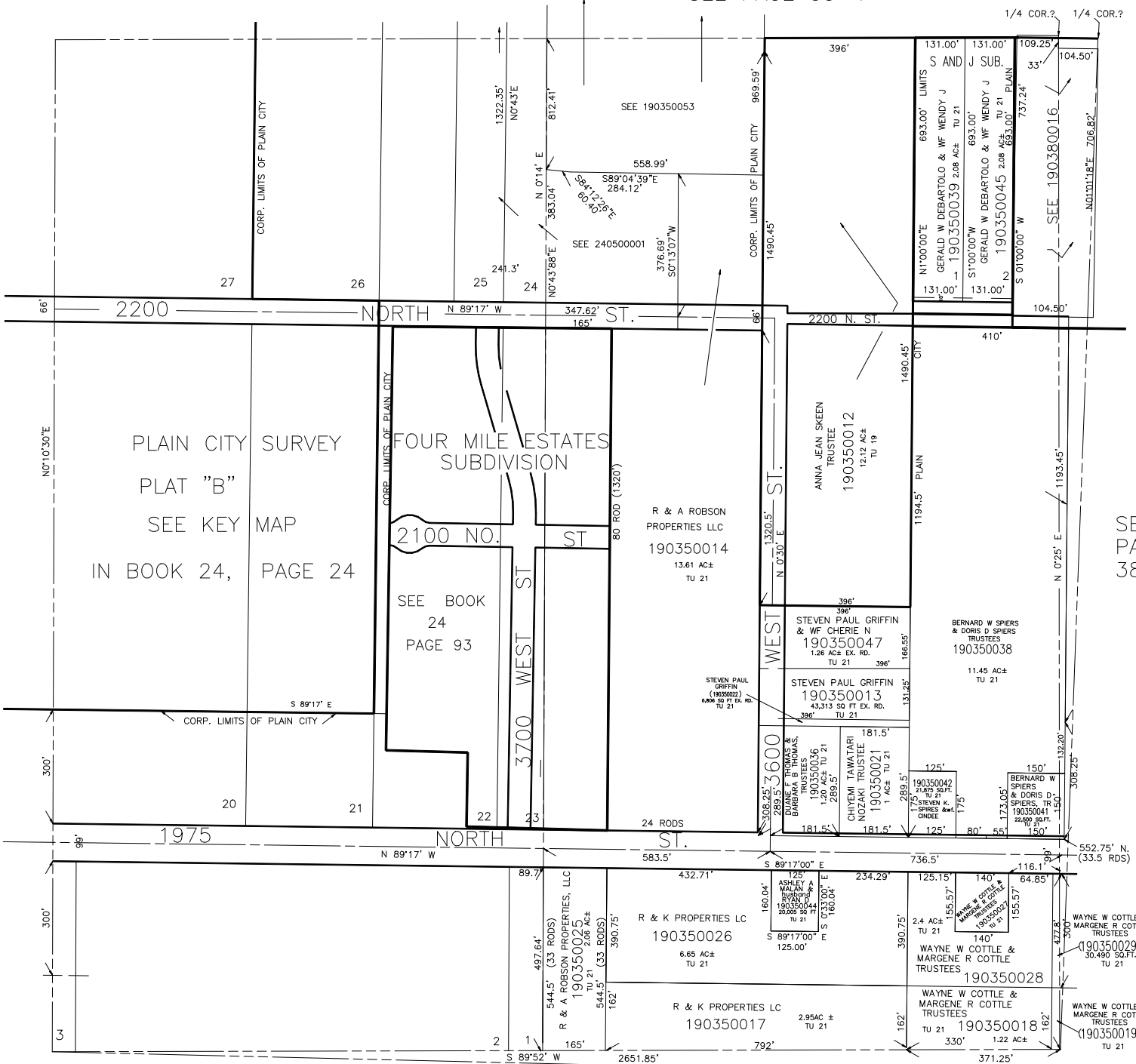
IN PLAIN CITY DISTRICT & PLAIN CITY

TAXING UNIT: 19,21,339

SCALE 1" = 200'

PREFIX : 19-035

SEE PAGE 35-1



SEE PAGE 38

SEE BOOK 15, PAGE 10